

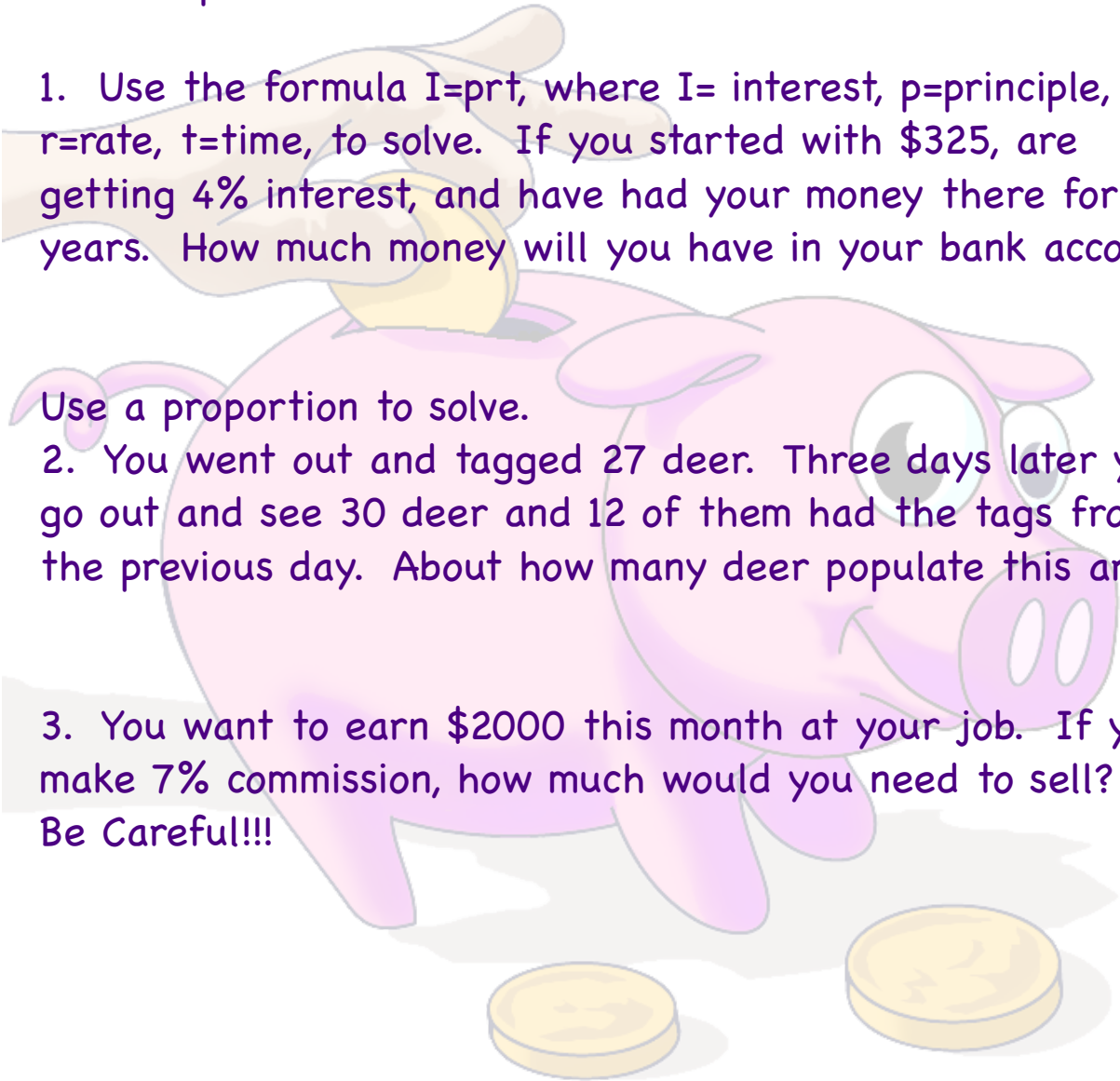
Warm-Up

1. Use the formula $I = prt$, where I = interest, p = principle, r = rate, t = time, to solve. If you started with \$325, are getting 4% interest, and have had your money there for 3 years. How much money will you have in your bank account?

Use a proportion to solve.

2. You went out and tagged 27 deer. Three days later you go out and see 30 deer and 12 of them had the tags from the previous day. About how many deer populate this area?

3. You want to earn \$2000 this month at your job. If you make 7% commission, how much would you need to sell?
Be Careful!!!



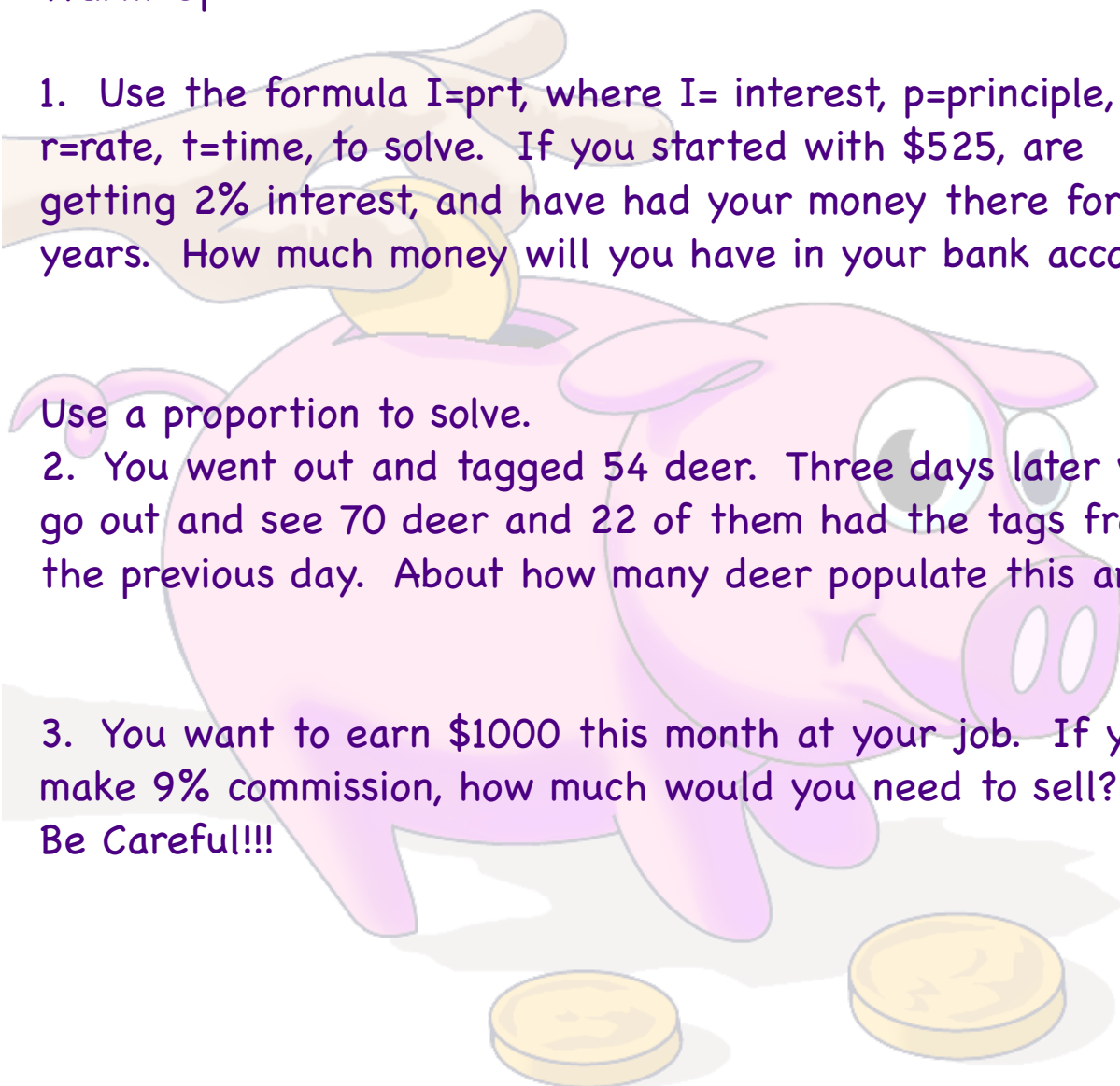
Warm-Up 2

1. Use the formula $I = prt$, where I = interest, p = principle, r = rate, t = time, to solve. If you started with \$525, are getting 2% interest, and have had your money there for 5 years. How much money will you have in your bank account?

Use a proportion to solve.

2. You went out and tagged 54 deer. Three days later you go out and see 70 deer and 22 of them had the tags from the previous day. About how many deer populate this area?

3. You want to earn \$1000 this month at your job. If you make 9% commission, how much would you need to sell?
Be Careful!!!



Vocabulary Review

Match each word with it's definition.

Commission

Interest

Discount

Gratuities

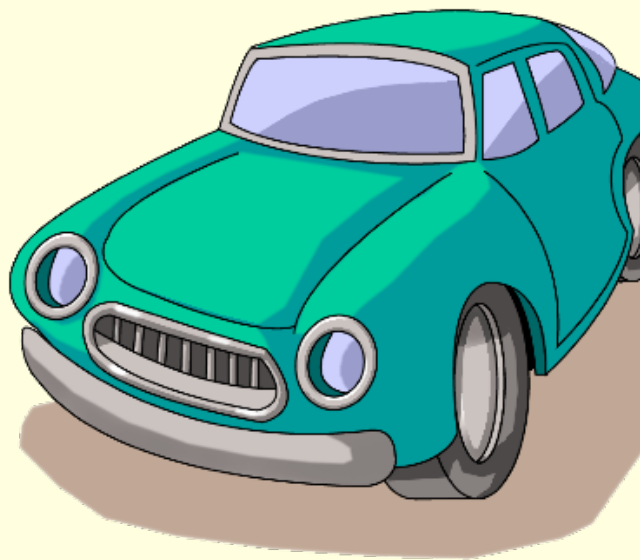
Profit

Mark-up

	A gift or reward, usually of money, for services; tip
	A charge for a loan, usually a percentage of the amount loaned. Calculated using the formula $I = prt$.
	A percentage or amount added to the cost to provide the seller with a profit
	A fee or percentage given to a sales representative or an agent for their services.
	To deduct or subtract from a cost or price.
	The money received after all operating expenses have been paid.

Launch

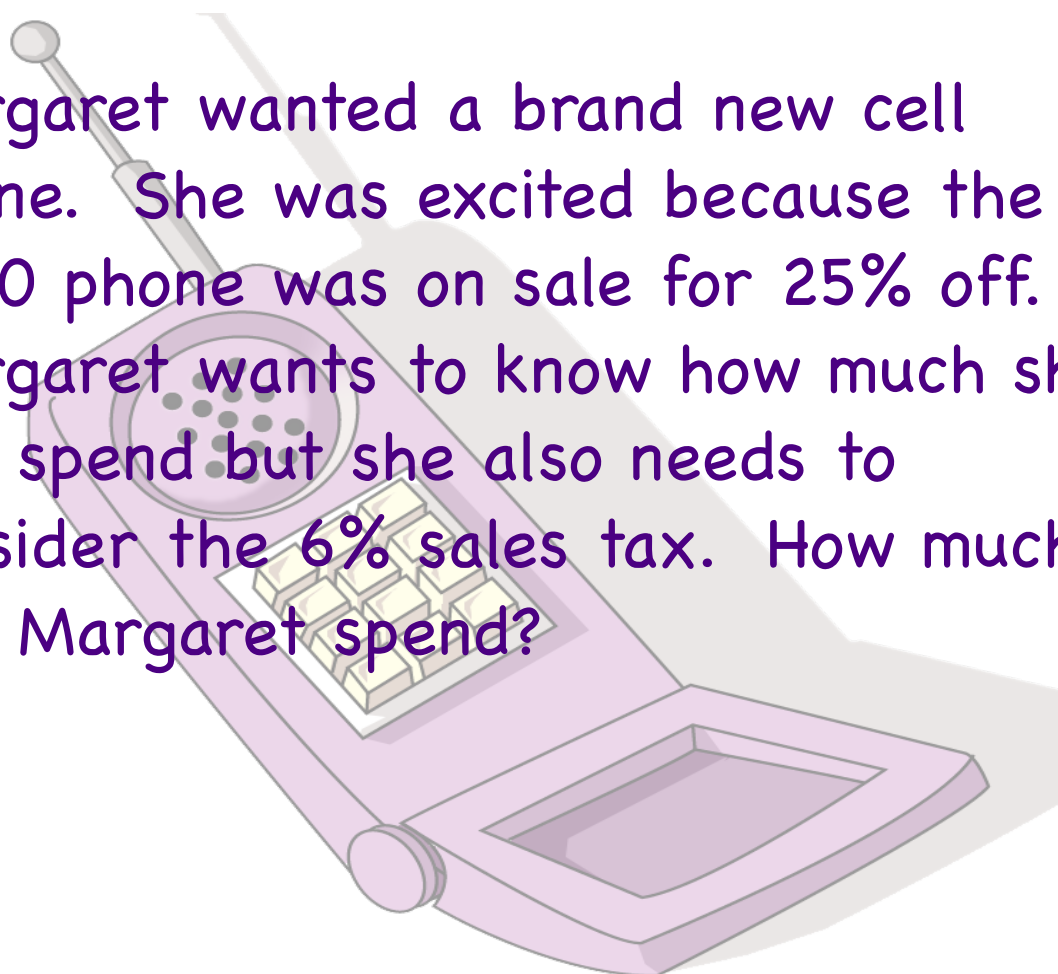
If you want to earn \$4500 this month and get a base pay of \$425 each month with 6% commission on your sales, how much would you have to sell?



John went out to Steak & Main for dinner. He spent \$35. Apply the 6% sales tax and a 18% tip and give the total amount that John will pay?



Margaret wanted a brand new cell phone. She was excited because the \$250 phone was on sale for 25% off. Margaret wants to know how much she will spend but she also needs to consider the 6% sales tax. How much will Margaret spend?



Directions:

1. Folder your paper in half one way and then in half the other way. You should now have 4 boxes.
2. You must complete number one. So label the first box #1
3. Then you need to complete one of each of the six colors.
4. Check your work!
5. If you have extra time, you need to complete more questions.

Stations

Number 1

Umaima's Furniture Store buys a bed frame at a wholesale price of \$151.00. If the markup rate at Umaima's Furniture Store is 50%, what is the new price for the bed frame in dollars? However, the bed frames are not selling so the store decides to discount them 50%. How much would the bed frame be?

Jamie wants to earn \$500 in interest so she'll have enough to buy a used car. She puts \$2000 into an account that earns interest. How long will she need to leave her money in the account to earn \$500 in interest?

Kelly plans to put her graduation money into an account and leave it there for 4 years while she goes to college. She receives \$750 in graduation money that she puts it into an account that earns 4.25% interest. How much will be in Kelly's account at the end of four years?

Which bank offer will give you more interest?

You are starting with \$536

Bank A: A four year CD with an interest rate of 6.3%

Bank B: A six year CD with an interest rate of 4.2%

You go to Kohl's. They are offering 30% off a shirt you want to buy for \$24.59. But you also have a coupon for an additional 15% off. What will be the price of the shirt?
(Hint: You cannot add the percents together.)

You buy a game for \$45 at Game Stop in Delaware. When you get home, you think they did not charge you the right amount. If the discount was 30%, what was the original price? If the game was originally \$65 did they charge you correctly? If not, what should you have been charged?

A student earned a grade of 80% on a math test that had 20 problems. How many problems on this test did the student answer correctly? (round to the nearest whole number)

There are 36 carpenters in a crew. On a certain day, 29 were present. What percent showed up for work? (round to the nearest tenth)

A student answered 86 problems on a test correctly and received a grade 98%. How many problems were on the test, if all the problems were worth the same number of points? (Round to the nearest whole number)

Manuel found a wrecked Trans-Am that he could fix. He bought the car for 65% of the original price of \$7200. What did he pay for the car? However, he had to add a 5% sales tax? So how much did he spend in total?(Round to nearest dollar)

If the sales tax in your city is 12.6%, how much would you pay for an item that costs \$57.00 after tax?

If the sales tax in a nearby city is 11.5% but the item was \$59.00, how much would it cost?

Which is a better deal?

Ms. Acton spent \$205.60 at Target. If the sales tax is 6%, what was her final bill? If she gave the cashier \$250, how much change would she receive?

The Kerwoods went out to eat at Chilles. If their bill was \$58.65 and they gave their server a 15% tip, how much did they pay altogether? What was the price per person if there are 4 people in the Kerwood family?

Pat makes 3% commission on his total weekly sales. If his weekly sales total \$2,350, what is his amount of commission earned?

If you want to earn \$3700 this month and get a base pay of \$275 each month with 8% commission on your sales, how much would you have to sell?

John sells a \$36,900 car, and gets 5.4% commission. Steven sells a \$32,550 car, and gets 6.2%. Who made more money?

- **A golf shop pays its wholesaler \$40 for a certain club, and then sells it to a golfer for \$75. What is the markup rate?**

- **A computer software retailer used a markup rate of 40%. Find the selling price of a computer game that cost the retailer \$25.**

- A shoe store uses a 40% markup on cost. Find the original cost of a pair of shoes that sells for \$63.

Closure: Discuss Question 1

Umaima's Furniture Store buys a bed frame at a wholesale price of \$151.00. If the markup rate at Umaima's Furniture Store is 50%, what is the new price for the bed frame in dollars? However, the bed frames are not selling so the store decides to discount them 50%. How much would the bed frame be?